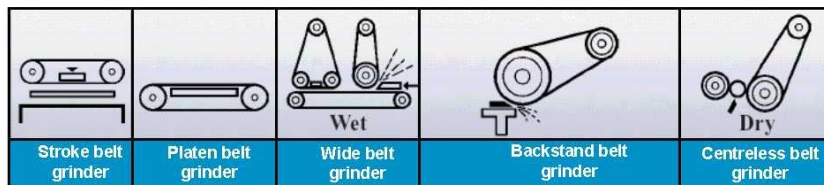


Narrow and Wide Belts (Coated & Non-Woven)



Santek Abrasives offers a comprehensive range of Narrow and Wide belts made from the materials as listed in the Coated Abrasive rolls (page 5) as well as Non-Woven Surface Conditioning rolls (page 6).

Belt grinding, lapping, finishing and polishing are abrasive machining processes used on metals, woods, plastics and other materials. A belt, coated in abrasive material, is run over the surface to be processed in order to remove material or produce the desired finish.



Safety



Coated abrasive belts perform best between 15m/s and 35m/s. Non-Woven Belts perform best between 10m/s and 20m/s.

NB! Excess speed is dangerous and may result in joint failure, backing disintegration or ripping, grain shedding or overheating.

NEVER USE COATED ABRASIVE BELTS AT SPEEDS IN EXCESS OF 40m/s!

Only use materials recommended for wet grinding in water, coolant or oil.

Use in accordance to ANSI B7.1.

Narrow belts are abrasive belts that are a maximum of 300mm wide.

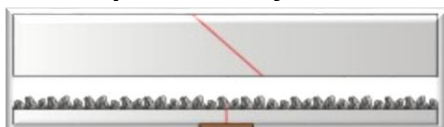
Wide belts are wider than 300mm.

Segmented wide belts When the width of the belt exceeds the width of the material jumbo roll, a multi join process is used to join the belts.



Santek abrasives offers the following option of belt joint types:

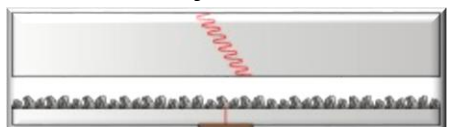
Tape or butt joint



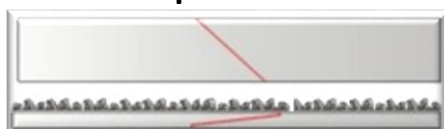
Tape joint with Top Scive



Sine joint



Lap Joint



Lap Joint with Top Scive



Scalloped Edge Belts



Scalloped edge belts are made by cutting a zig-zag effect on the side of narrow belts that allows the belt to conform quickly and easily to intricate configurations. This is most effective for final polishing and finishing operations on metal where no belt edge shadows are permitted.

Graphite Coated Canvas



Graphite Coated Canvas is used to reduce friction and improve belt sander performance by attaching (with PSA adhesive) a strip of graphite to the contact plate of your sander. Especially useful for reducing heat and friction on large stroke sanders.

Abrasive Restorers



Abrasive Restorers are used to clean and unclog coated abrasive discs and belts.

Abrasive Grease Sticks



Abrasive Grease Sticks are made from a high melting point grease. It is coated onto an abrasive belt or disc. This prevents clogging, prolongs life, prevents grain ripping, keeps the work piece cool and provides a brighter finish.

Key-Loc Belts



Key-Loc Belts are used to finish and polish parts in a closed system. The Key-Loc design allows the user to open and close the join at will.

Used in a ski type system on a rubber drum with the grain side of the material facing inward.

Products Suitable for Key-Loc Belts

Diameter	Recommended Speed rpm
Surface Con	V-Fine
Surface Con	Fine
Surface Con	Med
Surface Con	Coarse
Felt	3mm
Felt	6mm



Felt Products Used in conjunction with ether liquid or solid polishing compounds felt products can be used on a variety of materials.

Polishing compounds should be selected based on the desired finish and the type of material being polished.

Standard Sizes Available

Diameter	Recommended Speed rpm	Maximum Speed rpm
30mm	15000	30500
50mm	12000	25400

